

GEEVOR TIN MINE



FACTS

The Dry Room

<u>Sights</u>					

Sounds

Sights



Human impact on the environment

As you wander around the site you will notice the stark contrast between natural and man made environment. Below make some sketches of the shapes you notice that are man made and those which are natural.

Natural

Comments

Man-made

Comments

Comments

Man-made

Comments

Natural

Landscape

Find a suitable spot on site to sit down and draw a general sketch of the landscape. Remember you can add to it later so just get the basic details down. Try to show the interaction between man and the environment in your picture. So for example you could have the sea in the background and catch a chimney of a mine in the foreground.

Detective Work

Hard Rock—The Story of Tin

As you enter the museum take some time to look at the model of the local landscape. What do you learn about mining and the rich mineral deposits in the area?



Go to your right and have a look at the exhibits on minerals and ores. Then make your way into the next room and look for the following information.

What is an alloy?

What two metal ores make the following:

- Bronze = _____
- Pewter = _____
- Brass = _____

For how long has tin and copper been mined in this area?

Find some object in the display cases made of tin and draw them

Inventiveness

What is one of the waste products of tin and copper ore?

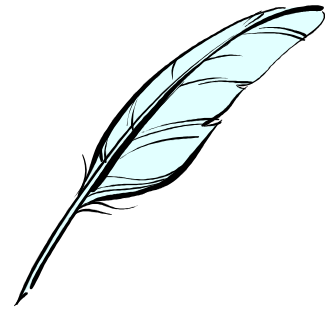
What could this be used for?

Sketch the wallpaper pattern that was made of this waste product



When were tin cans invented?

What were goose quills used for in mining?



What inventions have helped miners at their work over the years?



A Miner's Life

What was a Balmaiden? What did they do? Describe their appearance

What was a 'pare'?



Children and mining
1839

1842

Menu for a miner



What dangers and health problems did miners face and what was the average life expectancy?

VARIETIES OF CHALCEDONY

CARNELIAN



TIGERS EYE



AGATE



'BLOODSTONE'

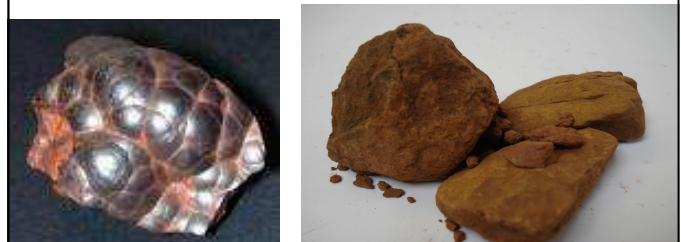


METAL ORES

**CASSITERITE
(TIN ORE)**



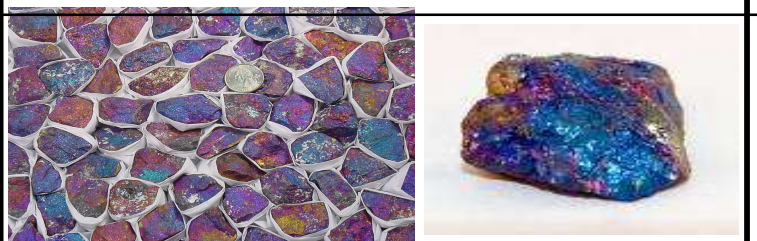
**HEMATITE
(IRON ORE)**



**GALENA
(LEAD ORE)**

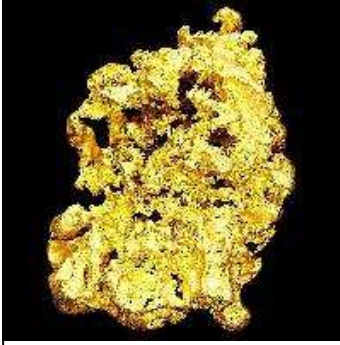


**CHALCOPYRITE
(COPPER ORE)**



METALS

GOLD



**IRON PYRITE
("FOOL'S GOLD")**



NATIVE COPPER



NATIVE SILVER



VARIETIES OF QUARTZ

AMETHYST



ROSE QUARTZ



ROCK CRYSTAL



AVENTURINE

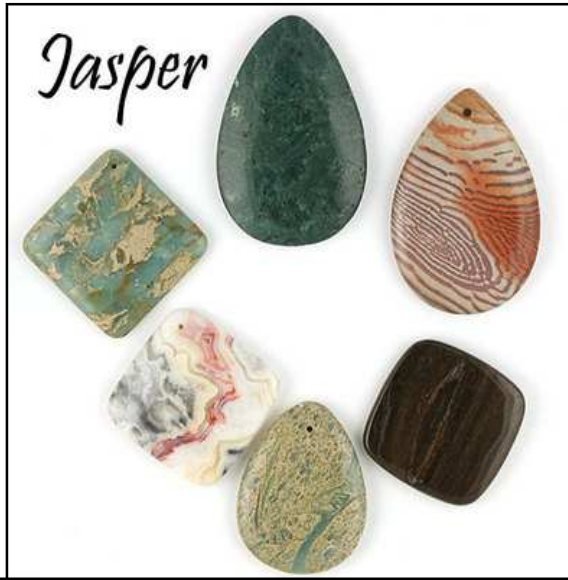


VARIETIES OF QUARTZ

SMOKY QUARTZ



CITRINE



WHICH OF THESE MINERALS
CAN **YOU** FIND
IN THE PANNING
TRAYS???....

<u>QUARTZ</u>	<u>METALS</u>	<u>METAL ORES</u>	<u>CHALCEDONY</u>
Visit the Geevor Tin Mine website to find out more about these metals and minerals			